

Ulricehamn (Sweden) – 26.- 27.01.2019

Competition Program

Date	Format	Distance	Remarks
26/01/2019	Interval Start F Relay	10 km / 15 km	
27/01/2019		4x5 km / 4x7,5 km	

Event Program

Date	Competition	TCM	Other
Friday 25/01/2019		17:00 At venue	
Saturday 26/01/2019	12:00 15 km F Men 14:15 10 km F Ladies	17:00 At venue	Prize giving ceremony at venue
Sunday 27/01/2019	11:15 4x5 km Relay Ladies 14:15 4x7,5 km Relay Men		Prize giving ceremony at venue

Contacts

Office	Name	Telephone	Email
OC Chairman	Johan Falk	+46 73 954 82 80	johan.falk@worldcupulricehamn.com
OC Office	Marita Tellander	+46 72 310 22 51	marita.tellander@worldcupulricehamn.com
Accommodation office	Johanna Wichers	+46 76 643 59 65	johanna.wichers@nuab.eu
Transportation office	Thomas Sohlström	+46 73 057 85 47	transport@worldcupulricehamn.com
Race office	Lisa Andersson	+46 70 391 27 98	lisa.andersson@edu.boras.se
Financial office	Caroline Ahlberg	+46 73 066 09 61	caroline.ahlberg@ulricehamn.se
Tax paper responsible	Caroline Ahlberg	+46 73 066 09 61	caroline.ahlberg@ulricehamn.se

Wax Cabins	Tobias Hendén	+46 70 284 98 63	teamareawc@gmail.com
Chief of competition	Stefan Jalderyd	+46 70 524 29 55	stefan.jalderyd@worldcupulricehamn.com
Truck driving permission			

Offices and their opening times

Office	Location	Opening times
Race office	Hotel Lassalyckan, at venue	Thursday 12:00 - 18:00, Friday 09:00 - 19:00, Saturday 09:00 - 19:00 Sunday 08:00 - 17:00
Accommodation office	At TCM, At venue	Friday 16:00 - 19:00 Saturday 16:00-19:00
Transportation office	Hotel Bogesund	Wednesday 08:00-19:00 Thursday 08:00 - 19:00 Friday 08:00 - 19:00 Saturday 08:00 - 19:00 Sunday 08:00 - 17:00
Accreditation office	Hotel Lassalyckan, at venue	Thursday 12:00 - 18:00 Friday 09:00 - 19:00 Saturday 09:00 - 19:00 Sunday 08:00 - 17:00
Financial office	At TCM, At venue	Friday 16:00 - 19:00 Saturday 16:00-19:00

Logistical information

Accommodation (World Cup Rules Art. 13)

Booking according the FIS Rules via FIS Online registration system

The OC offers following accommodation in different categories/prices/distances to venue (all full board):

3 star hotels in Ulricehamn, 5-10 min car distance to venue:

Hotel Lassalyckan, Hotel Bogesund, Hotel Nyboholm, all 125 CHF

4 star hotel in Borås, Scandic hotel, 30 min car distance to venue: 125 CHF

More information and maps on <http://worldcupulricehamn.com/sv/team>

Price for additional accommodation outside of the quota: 135 CHF

Price for additional single rooms outside of the quota: 160 CHF

Transport (World Cup Rules Art. 11)

Official airport : Landvetter Airport, Gothenburg (GOT)

The organizing committee will arrange transportation between the airport and the hotels in Borås/Ulricehamn. 1 transport (from and to the airport) free of charge. Price for additional transport : 20 CHF/person and trip

Information to the Shuttle service – Scandic Hotel Borås: Bus shuttle service

Hotels in Ulricehamn: Minibus shuttle service.

Reimbursement (World Cup Rules Art. 10 and 13)

- Accommodation costs:
Teams will pay directly to the OC at Finance office at the venue (beside Race Office)
Over quota costs are to be paid by cash or credit card.
- Carrying costs/Reimbursement :
 - Expenses sheets will be received in financial office during the race weekend or by e-mail: Payments will be done by bank transfer.

Prize money payment (Word Cup Rules Art. 8)

- Due to data protection rules the data's from the athletes have to be given directly to: caroline.ahlberg@worldcupulricehamn.com
- Or on-site to **Caroline Ahlberg** in the reimbursement office (opening times see above)
- Prize money is available on FIS Website under: <http://www.fis-ski.com/inside-fis/document-library/cross-country/#deeplink=forms>
- An athlete who receives prize money in Sweden for the first time must present a copy of his/her PASSPORT to the organizer.

Income tax information for prize money:

The gross amount of the prize money will be reduced according to;

1. Income tax -15,00 %, for all the prize winner regardless of the country.
2. And additional, Social contribution -31,42%, If the prize winner is a citizen from a country other than EU/EES:

For citizen from a country other than EU/EES

The tax burden **can be reduced to -15 %**, if the athlete is a citizen in a country outside EU/EES, which co-operate with Swedish authorities regarding social contributions. The athlete must then present a “certification of coverage” which shows that he/she belongs to the social insurance system (pays social contributions) in his/her own country. Please contact your home country’s tax association for the certificate. **To get the lower tax this “certificate of coverage” must be presented to the organizer by the latest January 30th 2019.** If any questions, please contact caroline.ahlberg@worldcupulricehamn.com

Waxing facilities (World Cup Rules Art. 14)

Wax cabins: available from Monday 21/01/2019 at 16:00 ☐

Waxing trucks: teams arriving with trucks have to inform the OC before 03/10/2018 with exact measurements of the truck and in case of any special requirements.

Regulations of radio equipment/Radio Frequencies:

The import, export and the operation of radio equipment in Sweden is regulated by national law. Permits for the use of radio transmission equipment must be requested according to national specifications.

[Link - application form](#)

Regulations of Visa:

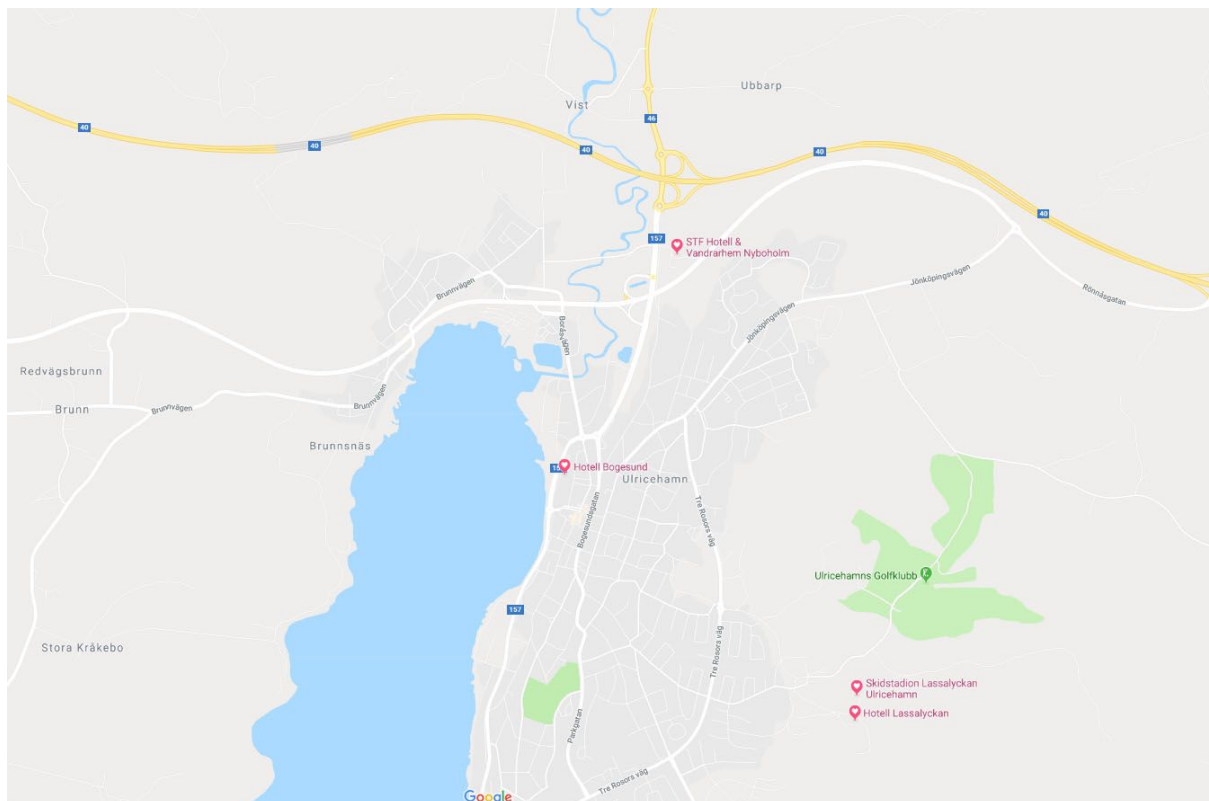
Remember that citizens of some countries will need Visa for visiting Sweden. Please check with your embassy if you need a Visa for Sweden.

Special permissions for truck driving (Sunday- and night, other days with special regulations)

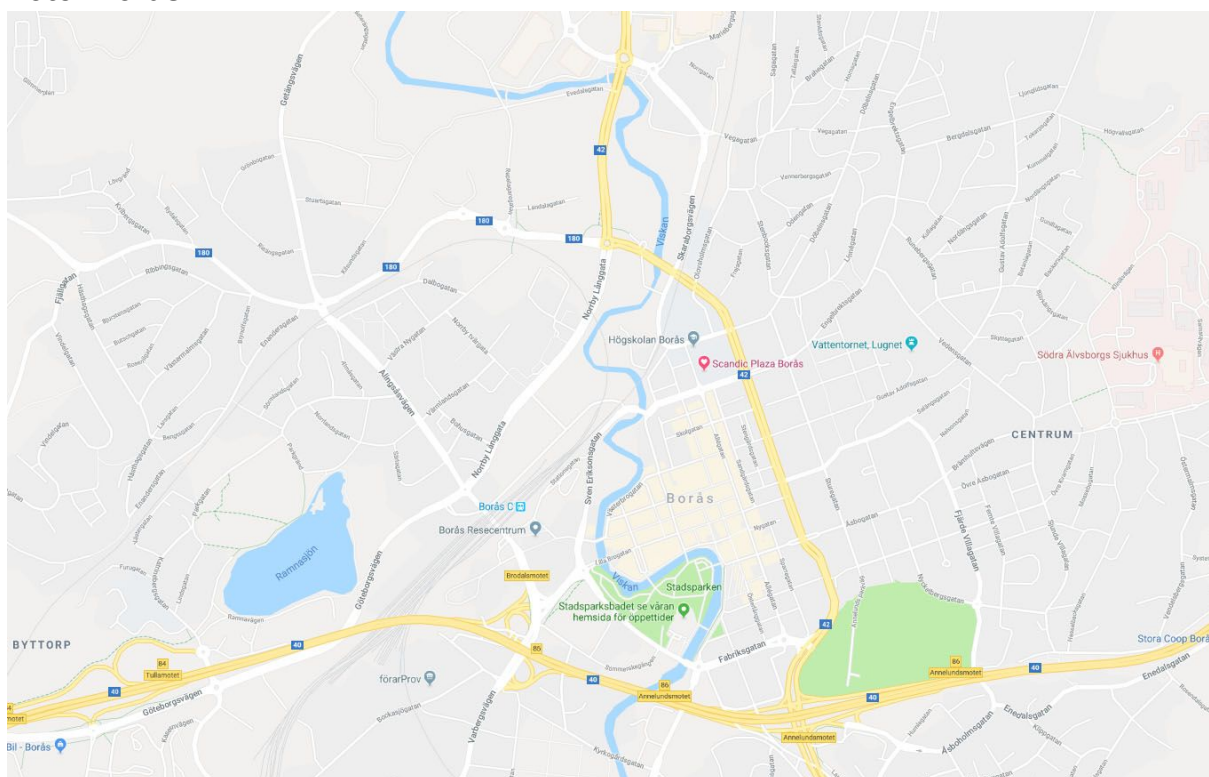
No permissions needed.

Special advices for the route and roads (from the previous World Cup stage and to the next one)

Team Hotel overview: Hotel Ulricehamn

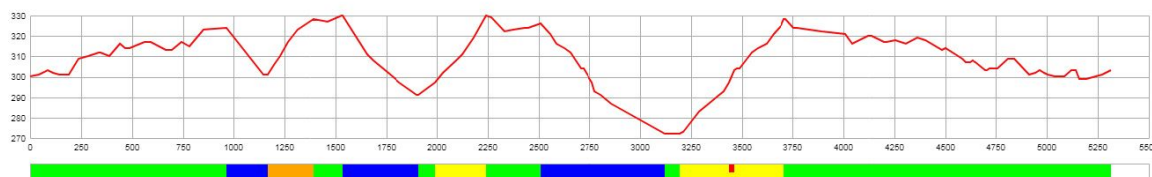


Hotel Borås

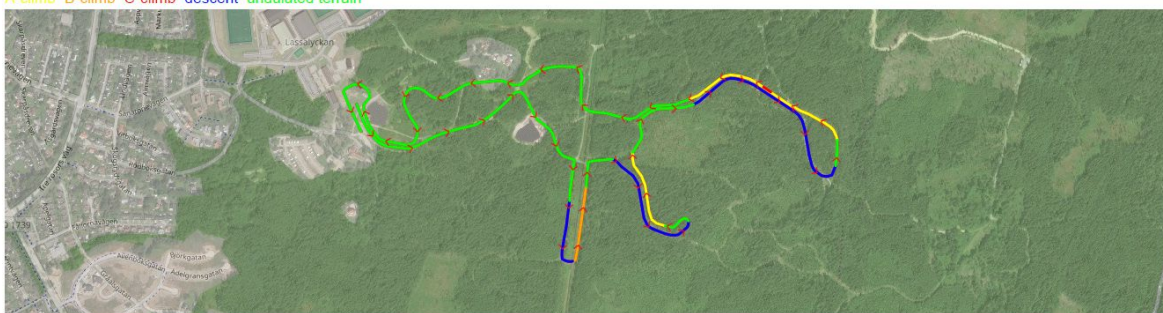


Maps and Courses

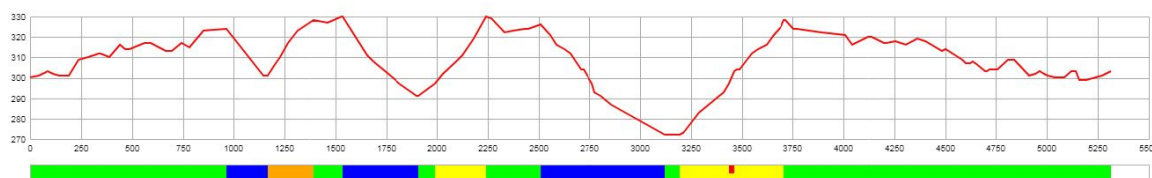
Course length:	5,315m	Height difference (HD):	58m	Lowest point:	272m
Course category:	D	Maximum climb (MC):	56m	Highest point:	330m
		Total climb (TC):	190m		



A-climb B-climb C-climb descent undulated terrain



Course length:	5,315m	Height difference (HD):	58m	Lowest point:	272m
Course category:	D	Maximum climb (MC):	56m	Highest point:	330m
		Total climb (TC):	190m		



A-climb B-climb C-climb descent undulated terrain

